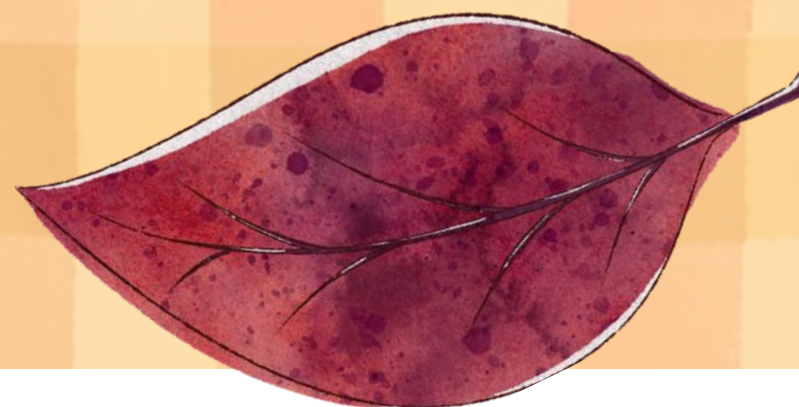


The page features a decorative border of various autumn leaves in shades of orange, red, brown, and purple, set against a background of vertical stripes in warm tones. A dashed brown line runs horizontally across the page, framing the central text.

Blwyddyn 3

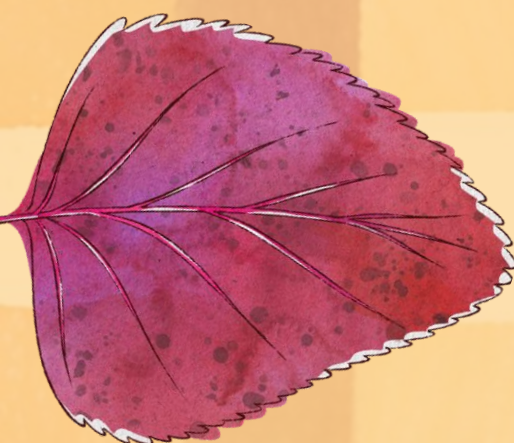
# Whose Footprints are Those?



---

# What did we do?

- Ecosystems
- Habitats
- Life cycles
- Litter Picks
- Data
- Stop Litter! Posters
- Informative leaflets
- Letters to Heath Hospital





# What did we do?

## Our Learning Journey

1

**Litter Pick  
at Heath  
Park**

2

**Collected  
data and  
analysed**

3

**Identified the  
problem**

4

**Created posters and  
leaflets to encourage  
care for our local  
area.**

5

**Put our posters  
up in local  
shop windows.**

6

**Wrote a letter to Heath  
Hospital asking them to  
take care with their  
equipment.**



# Litter Pick



# Data

N Dydd Hun 30ain Medi 2024

LO: I am beginning to record, represent and interpret data in a variety of ways.

The most popular litter was paper.

The least popular litter was fabric. ✓

I found eleven pieces of plastic in total.

I found zero pieces of metal. ✓

The total number of glass and paper was 19. ✓

The difference between metal and paper is 12. ✓

The difference between plastic and metal is 5. ✓

The total number of litter that I found was 41. ✓

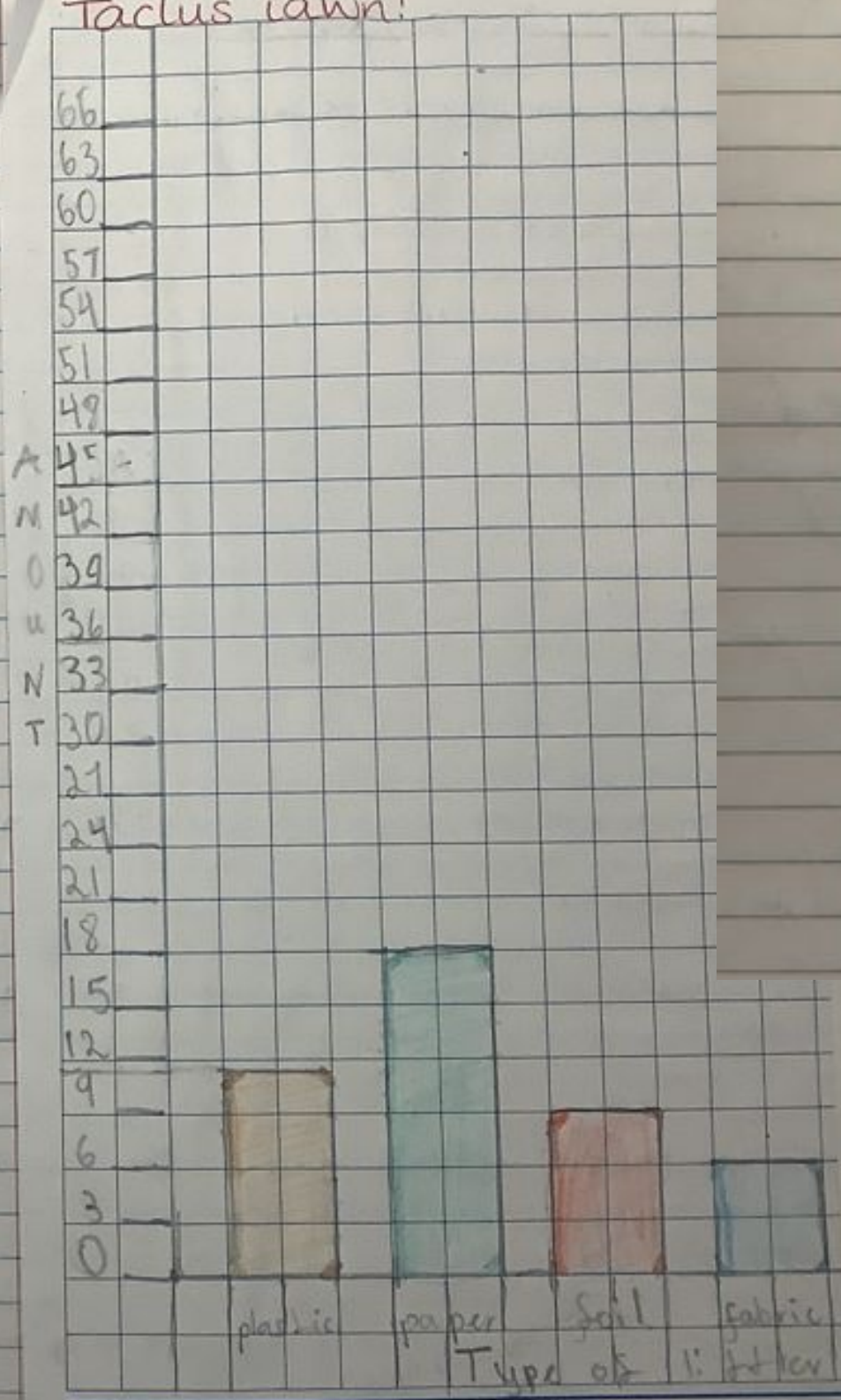
I do think that there is a link between the number of bins and the amount of litter because the more bins there are the less people put things in the bin. ✓

We could carry on helping the environment by litter picking and not litter instead of the lights put your things in the bins.

One question I could ask about my graph is what is the difference between rubber and foil. ✓

Bendigedig Danielle. ☺☺

Taclus iawn!



N Dydd Gwener 27ain Medi  
LO: To record and present data in a variety of ways.

Litter	Tally	total
plastic		22
Paper/card		15 ✓
glass		1
metal/foil		4
fabric		2
wood	0	0 ✓

# Posters and Leaflets



WOW Fact  
 Did you know that our parks are animals Habitats and they live in a eco System.

What could you do?  
 Now is the time you can fix this huge problem and a humans are hurting our beautiful, Sparky ecosystem by building loads causing light pollution.

where do you put the rubbish?

You should possibly find a bin so put it in that bin.



Who will stop?  
 Someone will need to stand out and tell the world but, it would be more than just one person!



**POLLUTION**



Why do you do it?  
 Well you litter there is a huge problem to fix and kind people have a litter pick and they are



# Letters to Heath Hospital

Dydd Iau 10fed Ionawr 2011  
LO: I can explain information and share  
ideas and opinions.

University Hospital  
of Wales  
Heath park  
Cardiff  
CF14 4XW

Dear Staff at Heath hospital,  
My name is India and I go to Bifchgrove  
primary school. We went to Heath park to  
carry out a litter pick. We found lots of  
litter such as plastic bottles, card board  
paper and metal cans. We did our litter pick  
a few weeks ago. We wanted to find  
out where the litter coming from the park  
because there was a lot of it on the  
pavement and on the grass.

I am writing to you because we find  
some of your aprons in the trees  
and in the bushes and grass. I think  
this is because your windows are  
open and your doors are open so the  
wind could of taken the aprons with  
it. Our topic is where footprints are made?

I would like you to know that you are  
hurting the environment. We have learnt that  
litter is bad for the environment because  
the animals are getting hurt by it. From India